



RAYSTAR

OLED Display Provider

TFT w/HDMI Produce

Version:E3

Your best partner of display solutions
OLED Display Manufacturer

RAYSTAR Optronics, Inc.

www.raystar-optronics.com





Raystar TFT support HDMI (Raspberry Pi)

SIZE	Raspberry Pi version	Item#	RESOLUTION	INTERFACE	BRIGHTNESS	TECNOLOG Y (TN, IPS, MVA)	TOUCH (NO, RTP, CPT)	OPERATING TEMP.
5.0"	P1-P3	RFF50XB-1IW-DHN	800 x 480	HDMI	500 nit (cd/m ²)	TN	NO	0°C ~70°C
5.0"	P3+	RFF50VB-1IW-DHN	800 x 480	HDMI	500 nit (cd/m ²)	TN	NO	-20°C ~70°C
5.0"	P1-P3	RFF50XB-1IW-DHS	800 x 480	HDMI	350 nit (cd/m ²)	TN	RTP	0°C ~70°C
5.0"	P3+	RFF50VB-1IW-DHS	800 x 480	HDMI	350 nit (cd/m ²)	TN	RTP	-20°C ~70°C
5.0"	P1-P3	RFF50XB-1IW-DHG	800 x 480	HDMI	400 nit (cd/m ²)	TN	CTP	0°C ~70°C
5.0"	P3+	RFF50VB-1IW-DHG	800 x 480	HDMI	400 nit (cd/m ²)	TN	CTP	-20°C ~70°C
5.0"	NO support	RFF500B-1IW-DHN	800 x 480	HDMI	500 nit (cd/m ²)	TN	NO	-20°C ~70°C
5.0"	NO support	RFF500B-1IW-DHS	800 x 480	HDMI	350 nit (cd/m ²)	TN	RTP	-20°C ~70°C
5.0"	NO support	RFF500B-1IW-DHG	800 x 480	HDMI	400 nit (cd/m ²)	TN	CTP	-20°C ~70°C

***O-film available:**

- RFF500B -1ZH-DHS / RFF500B -1ZH-DHG / RFF50VB -1ZH-DHG

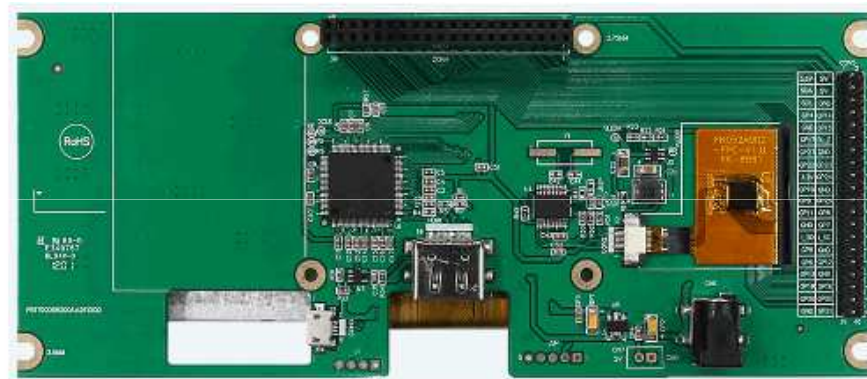
***High brightness available:**

- RFF500B -1IH-DHN / RFF500B -1IH-DHS / RFF50VB -1IH-DHG / RFF50VB -1IH-DHS



Raystar TFT support HDMI (Raspberry Pi)

SIZE	Raspberry Pi version	Item#	RESOLUTION	INTERFACE	BRIGHTNESS	TECNOLOGY (TN, IPS, MVA)	TOUCH (NO, RTP, CPT)	OPERATING TEMP.
5.2"	P1-P3	RFS52XA-1ZH-DHG	480 x 128	HDMI	700 nit (cd/m ²)	TN	CTP	-20°C ~70°C
5.2"	P3+	RFS52VA-1ZH-DHN	480 x 128	HDMI	850 nit (cd/m ²)	TN	NO	-20°C ~70°C



- * RFS52XA-1ZH-DHN (NO TP) is also available.
- * RFS52VA-1ZH-DHG (w/ CTP) is also available.

Advantage

- Panel design: One piece
- Product life: 3~5years

Application

- White house: Oven, Audio
- Industry : Control panel



Raystar TFT support HDMI (Raspberry Pi)

SIZE	Raspberry Pi version	Item#	RESOLUTION	INTERFACE	BRIGHTNESS	TECNOLOGY (TN, IPS, MVA)	TOUCH (NO, RTP, CPT)	OPERATING TEMP.
7.0"	P1-P3	RFH70XB-1IW-LHN RFH70XA7-1IW-LHN	1024 x 600	HDMI	600 nit (cd/m ²)	TN	NO	-20°C ~70°C
7.0"	P3+	RFH70VA7-1IW-LHN	1024 x 600	HDMI	600 nit (cd/m ²)	TN	CTP	-20°C ~70°C
7.0"	P1-P3	RFH70XB-1IW-LHS RFH70XA7-1IW-LHS	1024 x 600	HDMI	400 nit (cd/m ²)	TN	RTP	-20°C ~70°C
7.0"	P3+	RFH70VA7-1IW-LHS	1024 x 600	HDMI	400 nit (cd/m ²)	TN	RTP	-20°C ~70°C
7.0"	P1-P3	RFH70XB-1IW-LHG RFH70XA7-1IW-LHG	1024 x 600	HDMI	450 nit (cd/m ²)	TN	CTP	-20°C ~70°C
7.0"	P3+	RFH70VA7-1IW-LHG	1024 x 600	HDMI	450 nit (cd/m ²)	TN	CTP	-20°C ~70°C
7.0"	P3+	RFF70VA2-1IW-DHN	800 x 480	HDMI	400 nit (cd/m ²)	TN	NO	-20°C ~70°C
7.0"	P3+	RFF70VA2-1IW-DHS	800 x 480	HDMI	250 nit (cd/m ²)	TN	RTP	-20°C ~70°C
7.0"	P3+	RFF70VA2-1IW-DHG	800 x 480	HDMI	350 nit (cd/m ²)	TN	CTP	-20°C ~70°C
7.0"	P3+	RFF70VG-1ZW-DHG	800 x 480	HDMI	320 nit (cd/m ²)	TN+ O film	CTP	-20°C ~70°C
7.0"	NO support	RFF700G-1IW-DHN	800 x 480	HDMI	460 nit (cd/m ²)	TN	NO	-20°C ~70°C
7.0"	NO support	RFF700G-1IW-DHS	800 x 480	HDMI	350 nit (cd/m ²)	TN	RTP	-20°C ~70°C
7.0"	NO support	RFF700G-1IW-DHG	800 x 480	HDMI	350 nit (cd/m ²)	TN	CTP	-20°C ~70°C

*Steel Frame / O-film are Optional.

*RFF70VG-1IW-DHS is available, but not recommend in new project.

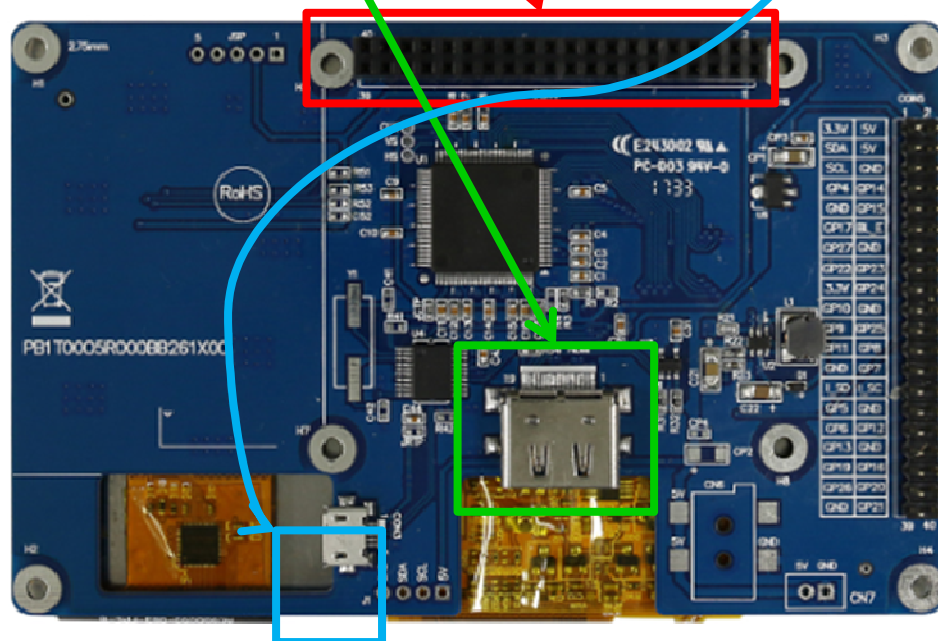
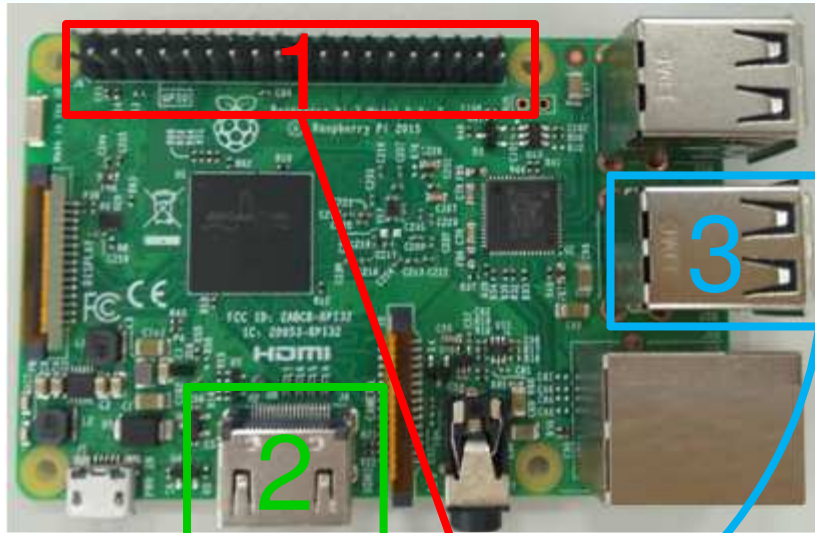


Raystar TFT support HDMI (Raspberry Pi)

SIZE	Raspberry Pi version	Item#	RESOLUTION	INTERFACE	BRIGHTNESS	TECNOLOGY (TN, IPS, MVA)	TOUCH (NO, RTP, CPT)	OPERATING TEMP.
10.1"	P1-P3	RFK101XF-1YH-LHN	1280 x 800	HDMI	1100 nit (cd/m ²)	IPS	NO	-20~70°C
10.1"	P3+	RFK101VF-1YH-LHN	1280 x 800	HDMI	1100 nit (cd/m ²)	IPS	NO	-20°C ~70°C
10.1"	P1-P3	RFK101XF-1YH-LHS	1280 x 800	HDMI	750 nit (cd/m ²)	IPS	RTP	-20~70°C
10.1"	P3+	RFK101VF-1YH-LHS	1280 x 800	HDMI	750 nit (cd/m ²)	IPS	RTP	-20°C ~70°C
10.1"	P1-P3	RFK101XF-1YH-LHG	1280 x 800	HDMI	900 nit (cd/m ²)	IPS	CTP	-20~70°C
10.1"	P3+	RFK101VF-1YH-LHG	1280 x 800	HDMI	900 nit (cd/m ²)	IPS	CTP	-20°C ~70°C
10.1"	P3+	RFK101VF-1YH-LHB	1280 x 800	HDMI	750 nit (cd/m ²)	IPS	CTP+USB	-20°C ~70°C
10.1"	NO support	RFK1010F-1YH-LHN	1280 x 800	HDMI	1100 nit (cd/m ²)	IPS	NO	-20~70°C
10.1"	NO support	RFK1010F-1YH-LHS	1280 x 800	HDMI	750 nit (cd/m ²)	IPS (5V)	RTP	-20~70°C
10.1"	NO support	RFK1010F-1YH-LHS-000	1280 x 800	HDMI	750 nit (cd/m ²)	IPS (12V)	RTP	-20~70°C
10.1"	NO support	RFK1010F-1YH-LHG	1280 x 800	HDMI	800 nit (cd/m ²)	IPS	CTP	-20~70°C



Raystar HDMI board for Raspberry Pi with Optional components

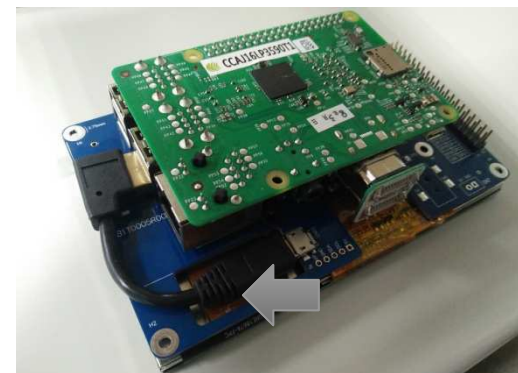


Spacer support

- Spacer Support for HDMI board
- Spacer Support for Raspberry Pi

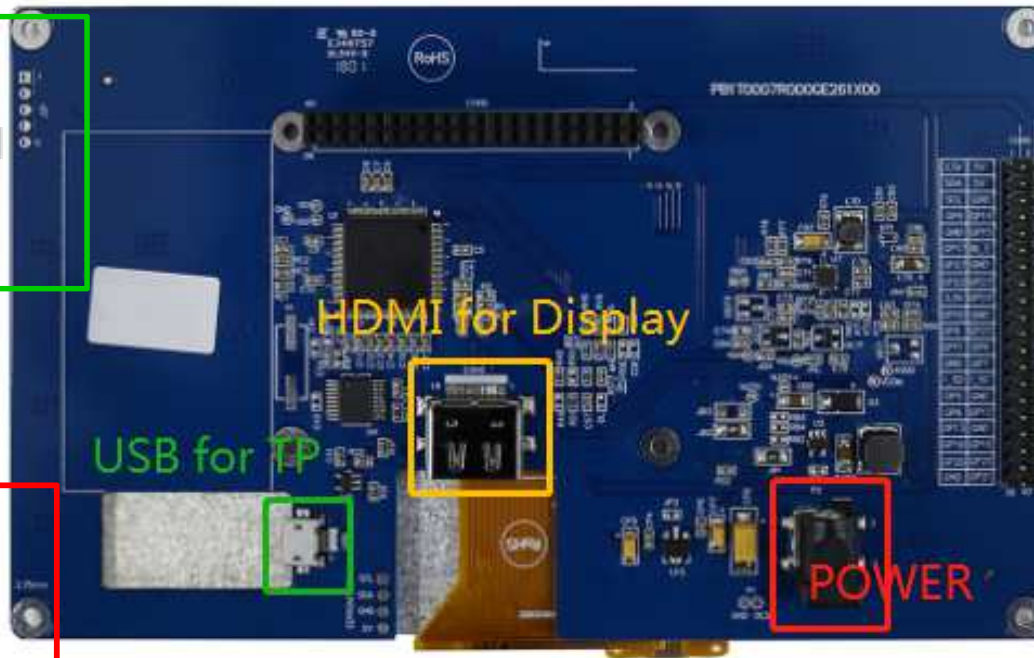


USB cable





Raystar HDMI board for Raspberry Pi with Optional components



PIN 12
Backlight
enable

Backlights can
be controlled by
pin 12 BL_E for
ON/OFF





- TP:
 - The default setting of the CTP is single-finger HDI Mouse, if there is a special request, we can provide online software updates.(if you need multi-finger, please contact sales.)
 - Our TP IC could support system in “Raspbian,windows7 & 10”
 - System of RTP need to do correction per year. (Please contact sales if you need this support.)
- For 7” and 10.1” TFT modules, the HDMI power is separate from the Adapter, so the HDMI power can’t drive the TFT modules directly. please must connect Adapter to have power supply.
- For 10.1” TFT modules, it can support input voltage 5V or 12V which can lower down the current consumption and prevent backlight noise issue.
- The thickness of all Blue HDMI boards are 1.6mm , to enhance the strength and prevent deformation.



Raystar Optronics, Inc.

Central Taiwan Science Park

5F, No. 25, Keya Road, Daya Dist., Taichung City 42881, Taiwan

Tel : +886-4-2565 0761

Fax : +886-4-2565 0760

E-mail: sales@raystar-optronics.com
www.raystar-optronics.com